

# Sneh Enterprises

## PRODUCT CATALOGUE 2025

2 LEVER LOCK | 3 LEVER LOCK



# About The Company

Sneh Enterprises is a 30-year-old group, is engaged as an importer and distributor of iron sheet and sheet cuttings, dump agent, distributor, and provider of warehousing solutions for several major fertilizer and cement industries, as well as a manufacturer and exporter of builders hardware, locks, etc.

We have been associated with reshaping various metals and manufacturing a wide range of products in decorative, architectural, and traditional builders hardware in brass, aluminium, zinc, and iron, with specialization in high-quality iron and brass locks.

We excel in providing different finishes like satin chrome, satin nickel, gold, silver, black-nickel, copper, antique, etc. Electrophoretic lacquer can be used on forged brass products for a long-lasting finish. We also specialize in painted, anodized, and powder-coated iron and aluminium products.

With a team of professional and skilled employees, our production is fast, accurate, and always on time. From the very first day, the company has followed the philosophy of 'QUALITY FIRST'.

We offer complete packaging solutions like blister packing, skin packing, and custom-designed printed boxes as per the buyer's specifications—all under one roof.

With a strong reputation for design orientation, we always maintain spare capacity to design new products in sand-cast and forged brass, aluminium, zinc, and iron hardware as per specifications. The company has its market share in India as well as overseas in Europe, the U.K., South Africa, and other countries.

We are very excited to welcome you to explore our latest catalogue. We always appreciate queries and suggestions from our valued customers. Designs and specifications may vary as per market trends.

# Ways To Connect With Us



## OFFICE ADDRESS

C-285 Phase 2 Tala Nagri Ramghat Road,  
Aligarh, Uttar Pradesh, India



## CALL/WHATSAPP

+91-8077550379

+91-9897346184



## EMAIL

atul@snehenterprises.net

info@snehenterprises.net



## WEBSITE

[www.snehenterprises.net](http://www.snehenterprises.net)

# Table Of Content

2-Lever Lock .....	01
3-Lever Lock .....	02
Lock Handle - 01 .....	03
Lock Handle - 02 .....	04
Lock Handle - 03 .....	05
Lock Handle - 04 .....	06
Lock Handle - 05 .....	07
Lock Handle - 06 .....	08
Lock Handle - 07 .....	09
Lock Handle - 08 .....	10
Lock Handle - 09 .....	11
Lock Handle - 10 .....	12
Lock Handle - 11 .....	13
Lock Handle - 12 .....	14
Lock Handle - 13 .....	15
Lock Handle - 14 .....	16
Lock Handle - 15 .....	17
Product Specifications .....	18
What's In The Box .....	18
Product Dimensions .....	19



## 2-Lever Lock





## 3-Lever Lock

# Lock Handle - 01

Sneh Enterprises



<b>Metal</b>	Iron
<b>Finishes</b>	Antique, Black Nickle, Chrome, Satin Nickel
<b>Size (inch)</b>	6

# Lock Handle - 02

Sneh Enterprises



<b>Metal</b>	Iron
<b>Finishes</b>	Antique, Black Nickle, Chrome, Satin Nickel
<b>Size (inch)</b>	6



# Lock Handle - 03

Sneh Enterprises



<b>Metal</b>	Iron
<b>Finishes</b>	Antique, Black Nickle, Chrome, Satin Nickel
<b>Size (inch)</b>	6

# Lock Handle - 04

Sneh Enterprises



<b>Metal</b>	Iron
<b>Finishes</b>	Antique, Black Nickle, Chrome, Satin Nickel
<b>Size (inch)</b>	6

# Lock Handle - 05

Sneh Enterprises



<b>Metal</b>	Iron
<b>Finishes</b>	Antique, Black Nickle, Chrome, Satin Nickel
<b>Size (inch)</b>	6

# Lock Handle - 06

Sneh Enterprises



<b>Metal</b>	Iron
<b>Finishes</b>	Antique, Black Nickle, Chrome, Satin Nickel
<b>Size (inch)</b>	6



# Lock Handle - 07

Sneh Enterprises



<b>Metal</b>	Iron
<b>Finishes</b>	Antique, Black Nickle, Chrome, Satin Nickel
<b>Size (inch)</b>	7

# Lock Handle - 08

Sneh Enterprises



<b>Metal</b>	Iron
<b>Finishes</b>	Antique, Black Nickle, Chrome, Satin Nickel
<b>Size (inch)</b>	7

# Lock Handle - 09

Sneh Enterprises



<b>Metal</b>	Iron
<b>Finishes</b>	Antique, Black Nickle, Chrome, Satin Nickel
<b>Size (inch)</b>	6

# Lock Handle - 10

Sneh Enterprises



<b>Metal</b>	Iron
<b>Finishes</b>	Antique, Black Nickle, Chrome, Satin Nickel
<b>Size (inch)</b>	7



# Lock Handle - 11

Sneh Enterprises



<b>Metal</b>	Iron
<b>Finishes</b>	Antique, Black Nickle, Chrome, Satin Nickel
<b>Size (inch)</b>	7

# Lock Handle - 12

Sneh Enterprises



<b>Metal</b>	Iron
<b>Finishes</b>	Antique, Black Nickle, Chrome, Satin Nickel
<b>Size (inch)</b>	6

# Lock Handle - 13

Sneh Enterprises



<b>Metal</b>	Iron
<b>Finishes</b>	Antique, Black Nickle, Chrome, Satin Nickel
<b>Size (inch)</b>	6

# Lock Handle - 14

Sneh Enterprises



<b>Metal</b>	Iron
<b>Finishes</b>	Antique, Black Nickle, Chrome, Satin Nickel
<b>Size (inch)</b>	6



# Lock Handle - 15

Sneh Enterprises



<b>Metal</b>	Iron
<b>Finishes</b>	Antique, Black Nickle, Chrome, Satin Nickel
<b>Size (inch)</b>	6

# Product Specifications

- Durable for long life operation
- Supplied with 2 keys
- Traditional handles on steel back plates

## What's In The Box?

1 x Pair of handles  
1 x Sash lock  
2 x Keys  
1 x Spindle  
8 x Fixing Screws

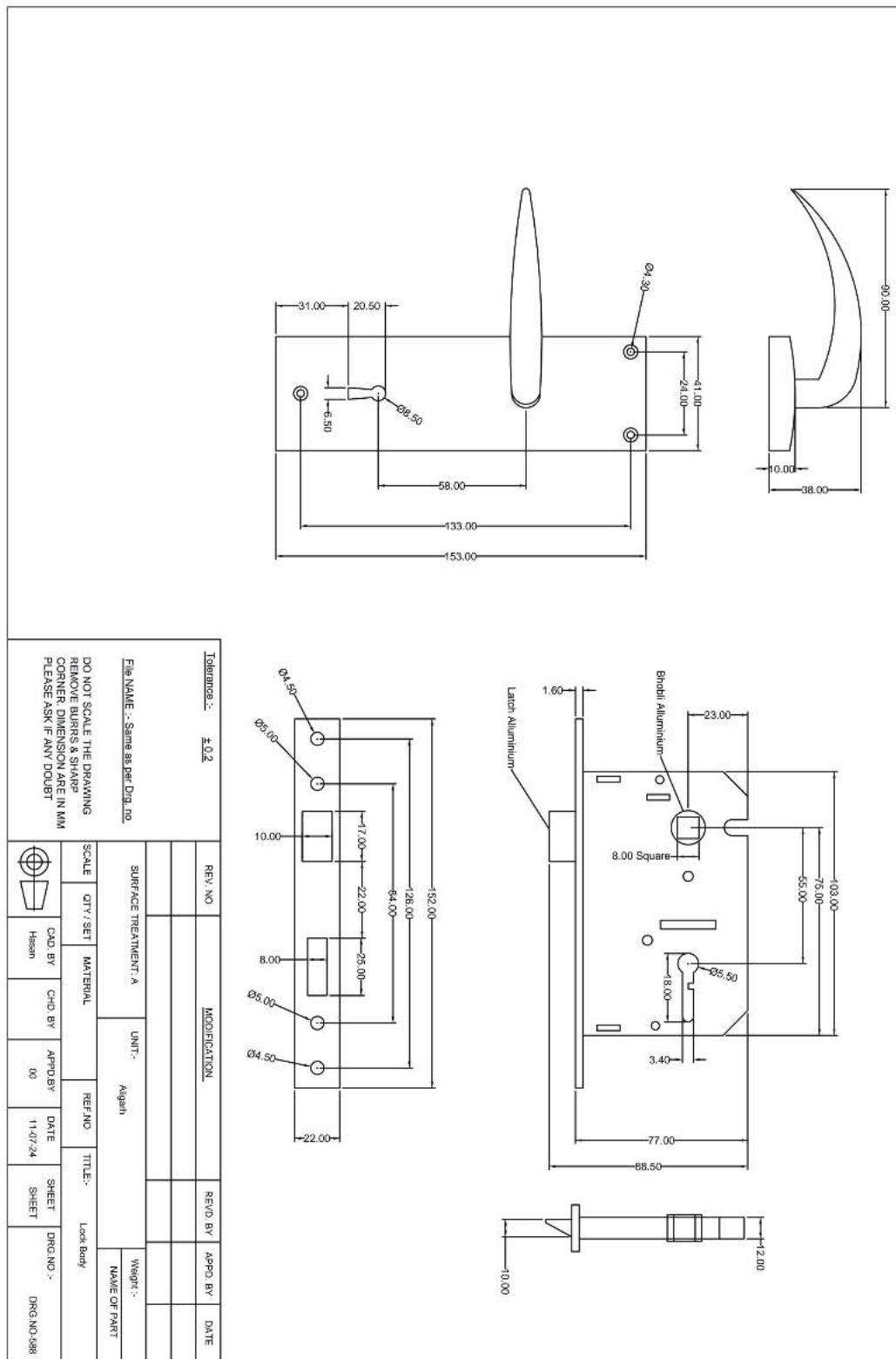
*Same for both 2-Lever Lock and 3-Lever Lock*



**2-Lever Lock**



**3-Lever Lock**



# Product Dimensions

We hope that you were able to easily explore & understand this product catalogue. We always appreciate queries and suggestions from you.

# Sneh Enterprises



## **CALL/WHATSAPP**

+91-8077550379

+91-9897346184



## **WEBSITE**

[www.snehenterprises.net](http://www.snehenterprises.net)



## **EMAIL**

[atul@snehenterprises.net](mailto:atul@snehenterprises.net)

[info@snehenterprises.net](mailto:info@snehenterprises.net)